

Ludbrooks Fabric Disposal Centre

CHARLES STREET — Phone 2 1031

Sells all 'Silk and Textiles' Fabrics including :—

SILKS — TERYLENES — TETORONS — COTTONS

At Genuine Factory Prices — These really have to be seen to be believed

ANDREW DUNCAN
PTY. LTD.

SMART SHOES for ALL OCCASIONS
WATCH OUR WINDOWS
84 George Street. Phone 2 2878.

E. J. BOCK
Phone 4 1551

PAINTER and DECORATOR
3 CHARLES STREET SOUTH
FOR REPAIRS AND RENOVATIONS
TOWN AND COUNTRY

DEAN'S BAKERIES

QUALITY BREAD

PROCERA, SLIMMING and DIABETIC BREADS

133 ST. JOHN ST. SLICED & WRAPPED 66 CHARLES ST.
Phone 2 3476 a Specialty Phone 2 3071

Lady Elizabeth
Hats

HIGH CLASS MILLINER

90 Elizabeth Street. Phone 2 3097

Louis Vermesy
UPHOLSTERER

SPECIALISTS IN ALL WORK

179 St. John Street. Phone 2 3422

ALLGOODS

132 CHARLES STREET

SPECIALISTS IN WORK CLOTHES AND FOOTWEAR

Tents, Flies and all Camping and Hiking Equipment

YOUNGER & BROWN
PTY. LTD.

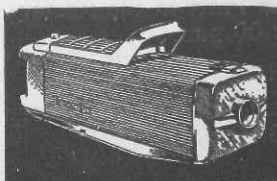
MONUMENTAL MASONS
Nunamina Avenue, Launceston
Telephone 2 2368

C. T. FINNEY & SONS
PTY. LTD.

FUNERAL DIRECTORS
16 BRISBANE ST., LAUNCESTON
Telephone 2 2368

DEEP CLEANING
with Higher Power, Higher Efficiency
with the
Electrolux ZC89 Cleaner

Price \$89.00
Deposit \$9.75
For Free
Demonstration
Phone 2 1751



POWELLS ELECTRIC SERVICE
69 York Street, Launceston

Reeman & Manning
PTY. LTD.

44 CAMERON STREET
FOR VALIANT AND ALL
HILLMAN MODELS
Phone: 2 1957

R. H. WATSON & SON
99A St. John Street, Launceston

WATCH SPECIALISTS &
JEWELLERS

St. John's Parish Messenger

Monthly News from the Mother Church of Launceston, Tasmania

No. 208

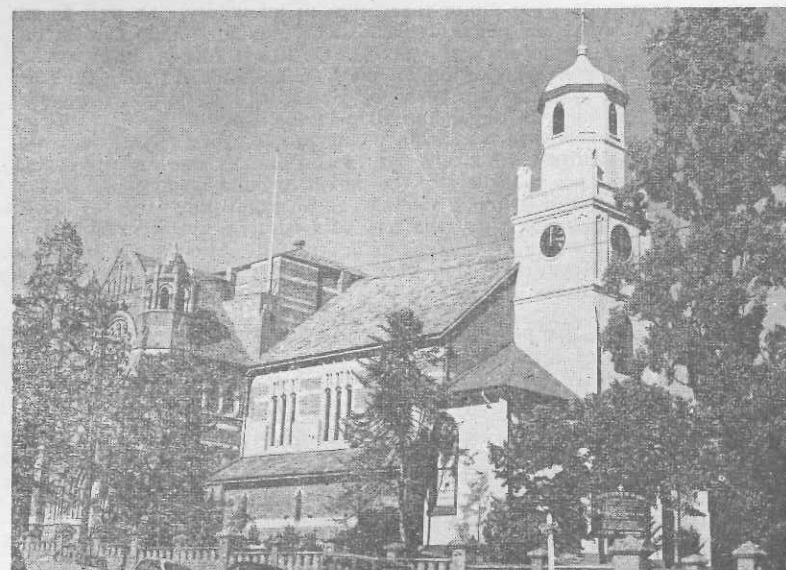
OCTOBER, 1968

Rector: Archdeacon Henry A. Jerrim, Th.L., E.D., C.F. Phone 2 3186

Assistant Clergy: The Reverend M. Johnson, Th. Schol.

Deaconess B. V. Robinson, Th. L.

Organist: Mr. Lindsay O'Neill, F.R.C.O. (Ch.M.), A.R.C.M. Phone 31 2998



THE RECTOR'S LETTER

My Dear Friends,

Life here is always busy, but for the next few weeks it will be more busy. In addition to our normal activities, we have our Parish Canvass, Confirmation, St. John's Festival and then in November, the Synod of our Diocese will be held here at St. John's. A large amount of preparatory work and organisational planning has to go into each of the above functions. I ask for your prayers for the events of the next few weeks and that each event may help forward the work of our Church, both in the parish, the Diocese and beyond.

First of all in relation to the Parish Canvass, when you read this, many of you will be about to make your decision about your financial commitment to the Parish over the next three years. This must be the individual's decision as to what is a worthy offering for him for God's work. I came across a pamphlet the other day which listed ten compelling reasons why we should give to the Church. I am asking for them to be printed in this Parish Messenger.

The special services which will be held this month are also high-lighted in this month's paper. May I commend these to your attention. We are thinking about the opportunity of giving of our money to God's work. It is very important that we should give of ourselves to God in worship in this Church.

Alf Chipman has written a letter for the Parish Messenger which is printed in this issue. I ask you to remember him in these closing weeks of his preparation for missionary service. He leaves for Africa very early in the New Year.

May God bless you all.

Yours very sincerely,

HENRY A. JERRIM.

MR. CHIPMAN'S LETTER

St. Andrew's Hall, Melbourne

My Dear Friends,

Time seems to have slipped away quickly since my little note for the Parish Messenger in April. Time always seems to pass quickly when one is busy and enjoying the work. It would take up several pages to explain our many and varied activities here at St. Andrew's

CONTINUED NEXT PAGE

OCTOBER HIGHLIGHT

Sunday, 6th October — 7 p.m. Confirmation Preparation Service.

Sunday, 13th October — 11 a.m. Service of Confirmation.

Sunday, 20th October — 8 a.m. First Communion and Breakfast.

7 p.m. Hospital Service. Attended by representatives of Medical and Nursing professions.

Sunday, 27th October, Festival Sunday — 8 a.m. Holy Communion.

10.30 a.m. Festival Service and Clipping of the Church.

7 p.m. Evensong.

Hall, perhaps a short list will give you some idea of what goes on.

We have morning and evening chapel each day, lectures on Missionary Pastoralia, the theology of Mission, the history of Missions, Missionary Methods, Old Testament, New Testament, Linguistics, Anthropology, together with a number of lectures of Ridley College. From time to time there are field surveys, then special lectures on topics such as Communion, the Christian attitude to war, other religions, politics.

One particularly interesting series of lectures this term has been on tropical medicines. Specialist doctors were invited to St. Andrew's and lectures on illnesses like dysentery, malaria, cholera and the precautions we should take to avoid them. That particular series also included sessions on psychology, especially in relation to the situation of the missionary. These lectures proved most stimulating and helpful.

From our weekly afternoon on gardening, painting or work inside, we have activities and lectures on topics ranging from motor mechanics to midwifery. As well as study there are occasions on which we relax and put study aside. This inevitably happens over the washing up, vegetable peeling, and now and then over coffee. Occasions such as birthdays are a good excuse for making a break in the heavy routine. We have one official outing each term. First term we spent an enjoyable Saturday at Sherbrook Forest. Second term we travelled to Mt. Donna Buang (4080 ft.) and had a tremendous time in the snow.

Each Sunday I am involved in work with young people. First term it was with a small Sunday School in the parish of St. Michael's, North Carlton. It was my privilege to lead a small team of four St. Andrew's students into the parish to build up teachers, parent interest, and pupil attendance. As a result of much visiting and an exhausting series of teaching training sessions, things began to happen. By the end of first term we were able to gradually recede and leave a self-supporting, expanding Sunday School. Attendances went from 30 to 90 and seven teachers were added to a staff of three. It was hard work, but exciting to see the change coming and the many answers to prayer.

This second term I have been advising and assisting at a much larger Sunday School at St. Mark's, Brighton. This has been a completely different situation, but one from which I have gained a great deal of experience.

ANOTHER LETTER FROM THE REV'D A. C. CHIPMAN

My Dear Friends,

A few weeks ago I received a letter from the Federal Secretary of C.M.S., certifying my location to the mission field (subject to satisfactory completion of training). I know that you will all be interested to know that I have been appointed to the Diocese of Mt. Kenya under Bishop Obadiah Kariuki. There is an opening for youth work in the Diocese, but my exact appointment and category of work will not be known until I hear from the Bishop.

It is amazing to stand back and survey the past years and see how God has so graciously brought me to this point in life. I am sure all my good friends at St. John's will join in praise and thanks to God "For His goodness endureth forever". May I thank you also for your prayers and ask that you continue to pray during this hectic third term of training and for all the packing, preparations and farewells which will come so soon.

Yours in His service, ALF CHIPMAN.

STOP PRESS —

List of things needed which you might not need and could prove helpful.

Tools—Spanners, screw drivers, saw, drill, bit and brace, files, pliers, plane, chisels, hammer, tool box, hack saw, tyre levers, carpenters' square, gardening tools, axe, cutlery.
P.S. What can't be used in Africa could be extra useful at Kelso.

CALENDAR FOR OCTOBER

October—	19 Saturday, 7.30 p.m. Youth Group.
3 Wednesday, 10.30 a.m. Holy Communion. 6.30 p.m. Parish Dinner.	20 19th Sunday after Trinity. 8 a.m. Holy Communion (First Communion of newly Confirmed followed by Communion Breakfast. 9.45 a.m. Family Service. 11 a.m. Holy Communion. 3 p.m. Children's Festival Service. 7 p.m. St. Luke's Hospital Day Service.
4 Thursday, 10 a.m. Morning Tea at Mrs. Holyman's. 4.20 p.m. Confirmation Class. 8 p.m. Choir Practice.	21 Monday, 7.30 p.m. Order of St. Luke and Healing Service.
5 Saturday, S.S. Teachers' Conference at Evandale. 2.30 p.m. G.F.S. Fair. 7.30 p.m. Youth Group.	23 Wednesday, 10.30 a.m. Holy Communion.
6 17th Sunday after Trinity. 8 a.m. Holy Communion. 9.45 a.m. Sunday School. 11 a.m. Holy Communion (Creche in Hall). 7 p.m. Preparation Service for Confirmation.	24 Thursday, 2.30 p.m. Mothers' Union entertain the blind. 8 p.m. Choir Practice.
7 Monday, 7.30 p.m. Order of St. Luke Prayer Service.	26 Saturday, 3 p.m. Garden Party at the Rectory. 7.30 p.m. Youth Club.
8 Tuesday, 6 p.m. Men's Fellowship and Tea.	27 St. John's Festival Sunday. 8 a.m. Holy Communion. 10.30 a.m. Festival Service. 7 p.m. Evensong.
9 Wednesday, 10.30 a.m. Holy Communion. 7.30 p.m. Vestry.	28 Monday, S.S. Simon & Jude's Day, 7.30 a.m. Holy Communion.
10 Thursday, 4.20 p.m. Confirmation Class. 8 p.m. Choir Practice.	November—
12 Saturday, 7.30 p.m. Youth Club.	1 Friday, All Saints' Day, 7.30 a.m. Holy Communion.
13 18th Sunday after Trinity. 8 a.m. Holy Communion. 9.45 a.m. Sunday School. 11 a.m. Confirmation—Bishop G. F. Cranswick. 7 p.m. Evensong.	ST. JOHN'S EVENING MOTHERS' UNION
14 Monday, 2.45 p.m. St. Luke's Hospital Auxiliary.	The next meeting of the Evening Mothers' Union will be held on Tuesday, 15th October, commencing with a service in the Chapel at 8 p.m., and followed by the meeting at the Rectory.
15 Tuesday, 8 p.m. Evening Mothers' Union.	This meeting will be a "mission" meeting as well, in which we hope all members will bring gifts suitable for the people of Honiara. Suggestions include—needles, cottons, light weight materials, children's materials and children's books. Parcels will be made up and mailed well before Christmas.
16 Wednesday, 10.30 a.m. Holy Communion.	
17 Thursday, 8 p.m. Choir Practice. 8 p.m. Women's Guild at Mrs. M. Easther's home, 13 Wyett Street.	
18 Friday, St. Luke's Day. 7.30 a.m. Holy Communion.	

ST. JOHN'S AUXILIARY TO ST. LUKE'S HOSPITAL

Next meeting will be Monday, 14th October, at 2.45 p.m. in Parish Hall. Afternoon tea hostesses—Mrs. Scott and Miss Lockwood.

Morning tea at the home of Mrs. E. Holyman, 8 Riverdale Grove, on Thursday, 3rd October. There will be a stall.

ST. JOHN'S WOMEN'S GUILD

The guild will meet again at the home of Mrs. M. M. Easther, 13 Wyett Street, on Thursday, 17th October at 8 p.m. instead of 10th October (owing to the show).

Supper hostesses—Mesdames Holyman, Watson and White.

White Elephant Sale—As the sale we had earlier this year was such a success, we thought we should try and hold another one about the same time next year, so thought we would now appeal to our parishioners and friends to put aside any articles of furniture, silver, brass, copper, china, glass, linen etc. that you have no further use for and we will remind you again when a date has been set. If, however, you would like to send the articles along now, we can take them as we have some storage space available. If you cannot deliver them, you could phone any of the following people and they will make arrangements to have them collected.

Mrs. H. A. Jerrim, 2 3186; Mrs. T. P. White, 2 4130; Mrs. H. Palliser, 2 3313; Mrs. J. Sheldrick 31 1596.

G.F.S.

The Annual G.F.S. Fair will be opened by Mrs. L. N. Sutton in the Kindergarten Hall at 2.30 p.m. on Saturday, 5th October. There will be afternoon tea, produce, cakes, sweets and a work stall with plenty of gifts suitable for Christmas and birthday gifts. Please come and buy.

MOTHERS' UNION

On Thursday, 24th October, at 2.30 p.m. in the Kindergarten Hall, members will entertain patients of the Evangelical Nursing Assn. and the Royal Tasmanian Institute for the Blind to a Musical Tea Party. Will all members please bring afternoon tea.

WHAT PROOFS ARE THERE FOR THE EXISTENCE OF GOD?

Is the Bible true? Has the Church failed to move with the times? Do people gain anything from going to Church? What is the Christian attitude to modern morality?

These are just some of the questions that teenagers ask about Christianity and modern life. Over 80 such questions have been put to the parish clergy this year by matriculation students. Can YOU give an answer to the questions printed above? What answers do you give when your friends or your children ask you about Adam and Eve, or the Church's view of birth control?

A small group of people meets at the Assistant Curate's residence (39 Elizabeth Street) every Wednesday night to attempt to find some answers. It is quite likely that other people will want answers to the same questions.

The discussion group provides a free and informal atmosphere for learning more about the Christian faith and its application to modern living. Why not join us?—8 p.m., at 39 Elizabeth Street (right next to St. John's) every Wednesday night.

BAPTISMS

Nicole Louise Sutton, Patricia Kaye Rawson, Warren Mark Carr, Brett Andrew Jones, Andrew John Nutting.

MARRIAGES

Lee Gilbert Graham and Vivienne Betty Flood, David Charles White and Anthea Louise Holmes, Denis Patrick Baker and Lauren Kay Coulson, Ronald William Hinds and Phyllis Doreen Grant, Peter David Steer and Jill Alison Watson, Michael Roy Lambert and Barbara Ann Groves Ricki Gordon Johnston and Teana Thwaites.

BURIALS

Ida Mary Pearce, Edith Beresford Grubb, Norma Ismay Pennicott, Alfred James Hill, Peter Richard Willett, Selina Isobel Devine, William James Wilson, Ernest Keith Winter, David Leonard Findlay, Gordon Caines Dodery.

Our sincere sympathy is extended to all those who have been bereaved.

PARISH MESSENGER

Donations to the Parish Messenger help us to defray the cost of printing, postage and distribution together with the Church News. Donations may be given to the Clergy or Church Wardens.

The following donations have been received: Mrs. D. M. Johnston \$1.00, Misses Sutton \$1.00, Messrs. G. G. Newton \$2.00, R. Sutton \$2.00, E.M.D. \$2.00. Thank You.

10 COMPELLING REASONS WHY I GIVE TO THE CHURCH

I GIVE because this is one way I can respond to Christ in gratitude and love.

I GIVE because I believe in Christ and His way as the only hope for humanity.

I GIVE because at my Confirmation I promised "to keep God's Holy Will".

I GIVE because I receive inspiration, courage, and hope through my church.

I GIVE because I want to bear the share that Christ expects me to carry.

I GIVE because I am helping children and youth to find high ideals and wholesome relationships in church.

I GIVE because I am helping to build a better world by bringing health and the knowledge of Christ's abundant life to needy people of other nations.

I GIVE so that my church can wisely plan to meet its expenses by knowing its expected income.

I GIVE because my support is needed if my church is to carry out its work.

I GIVE because the services and facilities of my church are always available to me, my family, and my friends.

WILL YOU make a truly proportionate commitment of your income for the important year just ahead . . . a year of hope and challenge?

St. John's Festival

You and your family are invited to the Garden Party at the Rectory on Saturday, 26th October, at 3.00 p.m.

CUT ALONG HERE

We will be pleased to be present at the Garden Party at the Rectory on Saturday, 26th October, at 3.00 p.m.

Signed Address

No. in Party Children Welcome

Return to the Rector by 21/10/68.